

# Minimate... Helping to keep your community safe



# What is Minimate?

**Minimate is the ultimate 3G GPS Safety Companion**, ideal for **lone worker safety, senior care and child protection.**

**It is a personal tracking device** which ensures the quick retrieval of any person (young or old) who has wandered off, become lost or been immobilised by injury.

About the size of a matchbox, the **Minimate device can be carried in your pocket, or worn on a lanyard.** It has a speaker and a microphone and acts like a phone when the **SOS button** is pushed, calling either the 24/7 response centre or a pre-programmed number of your choice and/or it will send **SMS or email alerts** in an emergency.

Managed through **BIGmate's Monitoring Software**, Minimate will help you to keep the people you care about safe by capturing and transmitting immediate and **accurate position finding data** which may be shared with a third party such as the police in times of need.



## Who can it help?

### Lone workers

Under Australian law, employers must manage the risks associated with any of their employees who are required to work alone or in remote locations. Employers must also ensure they have an effective means of communication with these workers.

This covers all workers anywhere whether they are far away from populated areas or working in the city on nightshift. It's a big responsibility made easy by Minimate and employers can comply with their duty of care by monitoring the whereabouts and safety of employees and keeping in contact with them in a way that doesn't affect productivity.

### Children

For parents, there is nothing more valuable than their children but what is the best way to keep them safe?

The answer is Minimate. It's small, easy to use and has the amazing ability to track and communicate indoors or outdoors using GPS and WiFi. In addition, it is activated by pressing one button to call for help. Minimate really is your first line of defence when it comes to child safety.

Whether they're lost in a shopping centre, walking home from school or camping with friends, Minimate will make sure your kids are alright, even when they're not in sight.

### Outdoor fitness

Getting outdoors is the best way to keep fit and healthy but it can put people in precarious situations. Lurking threats and injuries in isolated places are risks that can be neutralised by carrying Minimate.

Keep connected and protected in unexpected situations with the ability to alert others at the touch of a button and keep them informed of your position and condition.



Minimate is also waterproof to three metres and the battery can last for up to three days.

Before you head out for your next night time run or off the beaten track in search of adventure, make sure you've got Minimate with you for peace of mind.

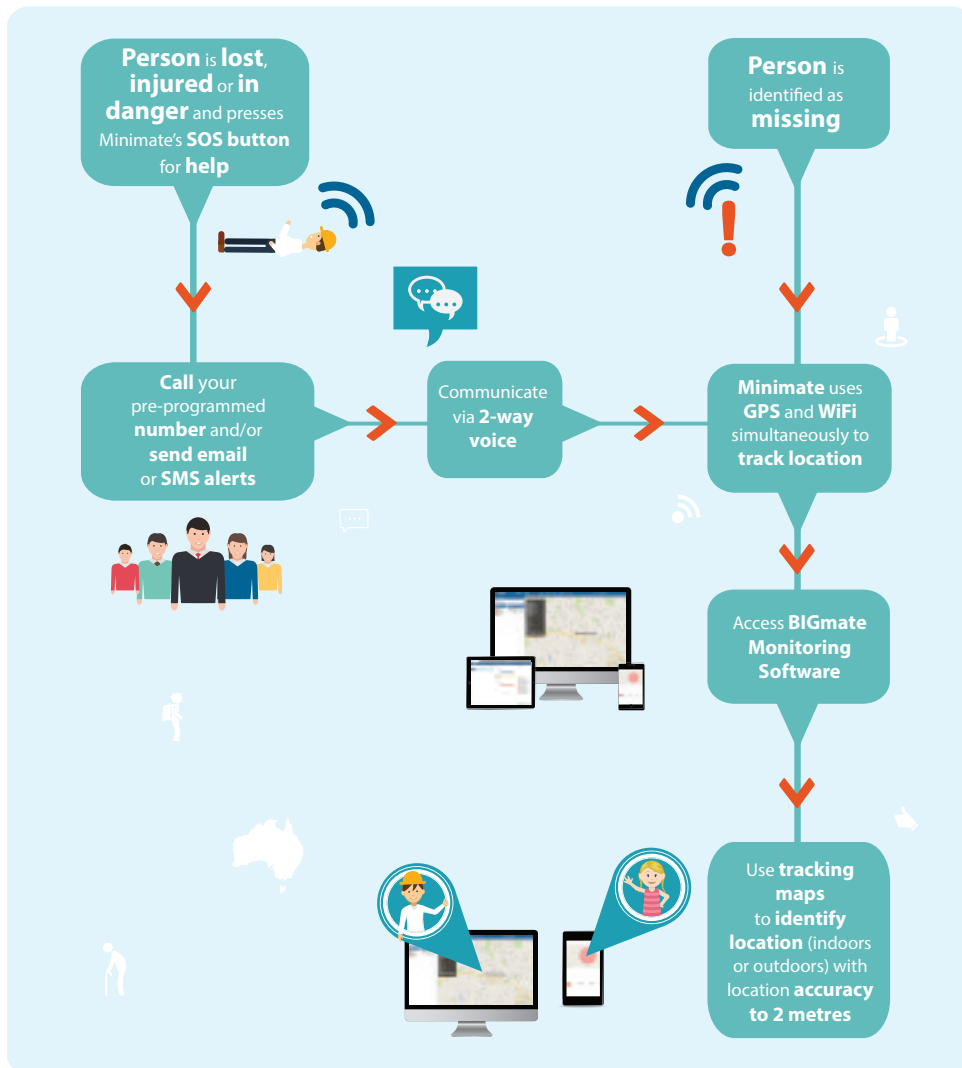
### Elderly

Injuries from falls and wandering off are two of the biggest risks involved when caring for the elderly. For dementia patients who are prone to wandering off Minimate will be a lifesaver because it can accurately track their location and help bring your loved one home again.

In the case of falls and injuries, Minimate is there when you can't be. It has the optional accessory of a lanyard so it can be worn around the neck and always kept within reach should an accident occur.

Minimate is also ideal for active or independent seniors who want the availability of emergency assistance with the push of a button.

## How Minimate works



## What would you do?

- Your employee suffers a serious injury in a remote location...
- Your elderly grandparent gets disoriented and wanders off...
- Your child is lost in a busy shopping centre...
- You're out for an evening run and hear footsteps behind you...

In these scary situations, Minimate is your best friend.

Keeping the community safe, Minimate connects people in vulnerable situations to the help they need with the touch of a button.

Using GPS and WiFi technology, Minimate provides accurate location information of the person carrying it and is also a two-way communication device with a full duplex microphone.

These features make Minimate the best personal tracking device available in Australia.

# Minimate specifications

## Key Features

- Two-way voice and Wi-Fi
- Built-in 3-axis accelerometer for motion sense
- Ultra low power sleep mode
- Voltage monitoring and low battery notification
- Waterproof (rated IP67) enclosure
- Tested and certified to **meet Australian, New Zealand and global standards**

## Cellular

- Internal cellular antenna
- **Data support:** SMS, GPRS, HSDPA packet data
- **Communication modes:** 2G(GPRS)/3G(HSDPA) packet data, TCP/IP, UDP and SMS
- **Operating bands (MHz):**  
GSM/GPRS: 850/900/1800/1900
- **Transmitter Power:** GSM/GPRS 850/900: 32.5dB 1800/1900: 29.5dB HSDPA/UMTS: All band 23dB
- **HSDPA data rates:** 384 Kbps upload/3.6 Mbps download

## Location Technology

- 56 channel GPS (with SBAS)
- SBAS: WAAS
- Location Accuracy: 2 metres CEP (with SBAS)
- Tracking Sensitivity: 162dBm
- Acquisition Sensitivity: 147dBm
- AGPS Capable
- Wi-Fi for indoor tracking

## Electrical

- Operating voltage 4.35V internal battery
- Power consumption
- Typical 200µA @4.2V (deep sleep)
- Typical 35.1 mA @ 4.2V
- (SMS+UDP connection, GPS off)
- Typical 105 mA @ 4.2V (continuous transmit)
- Ultra low power sleep mode
- Automatic over-the-air configuration on power-up

## Environmental

- Temperature: -20° to +70° C (operating); -40° to +85° C (storage)
- Humidity: 95%RH @ 50° C non-condensing
- RoHS compliant

## Physical

- Dimensions: 73.6 x 41.5 x 20.5mm
- Weight: 65g
- Waterproof (IPX 67) enclosure
- Connectors, SIM access: SIM access internal
- Certifications: FCC/CE/IC/PTCRB/AT&T
- Battery: rechargeable lithium-ion 850mAh/1700mAh
- Smart SOS button



**minimate**   
GPS safety companion

Find out more...

1300 477 787

[info@minimateaustralia.com.au](mailto:info@minimateaustralia.com.au)

[www.minimateaustralia.com.au](http://www.minimateaustralia.com.au)